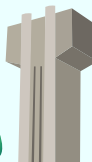


MY NEW PAGE AT CU MEDICINE

2020/21




香港中文大學醫學院
Faculty of Medicine
The Chinese University of Hong Kong

Contents

Faculty of Medicine The Chinese University of Hong Kong

 Room G07, G/F, Choh-Ming Li Basic Medical Sciences Building,
The Chinese University of Hong Kong, Shatin, Hong Kong

 (852) 3943 9243 / 3943 6891

 (852) 2603 7997

 faculty@med.cuhk.edu.hk

 <https://www.med.cuhk.edu.hk/>

 CUHKMedicine

 [cuhkmed_sa](#)

 CUHKMedicine

April 2020



香港中文大學
The Chinese University of Hong Kong

CUHK & Faculty of Medicine	P.1-2
Rankings	P.3-4
Faculty Deanery	P.5-8
Unique College System	P.9-17
MChB & GPS	P.19-20
Admissions	P.21-24
Learning Journey	P.25-26
Teaching Facilities	P.27-34
Exchange & Clinical Attachment	P.35-36
Awards & Scholarships	P.37-38
Research Excellence	P.39-42
Outstanding Medical Alumni	P.43-44
Appendix 1 – Transportation Guide	P.45
Appendix 2 – Campus Map	P.46

Information as at April 2020, unless otherwise specified

The Chinese University of Hong Kong (CUHK)

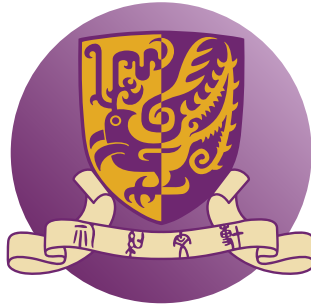
Motto

博文約禮

Through learning and temperance to virtue.

Mission

To assist in the preservation, creation, application and dissemination of knowledge by teaching, research and public service in a comprehensive range of disciplines, thereby serving the needs and enhancing the well-being of the citizens of Hong Kong, China as a whole, and the wider world community.



Emblem

The emblem of the University is the mythical Chinese bird *feng* (鳳) which has been regarded as the Bird of the South since the Han dynasty. It is a symbol of nobility, beauty, loyalty and majesty. The University colours are purple and gold, representing devotion and loyalty, and perseverance and resolution, respectively.

Vision

To be acknowledged locally, nationally and internationally as a first-class comprehensive research university whose bilingual and multicultural dimensions of student education, scholarly output and contribution to the community consistently meet standards of excellence.

Faculty of Medicine, CUHK

History

Established in 1981, the Faculty of Medicine has flourished and grown over the years, adding different schools of various disciplines and churning out groundbreaking medical discoveries as well as graduates of exceptional talents who have put it on par with its international and local counterparts. The Faculty has been ranked as one of the top 50 medical schools in the world in less than 40 years.



Chinese characters of CUHK (中大) are masked in the contours of the leaf veins



The colour green symbolizes youth and vigour of the Faculty

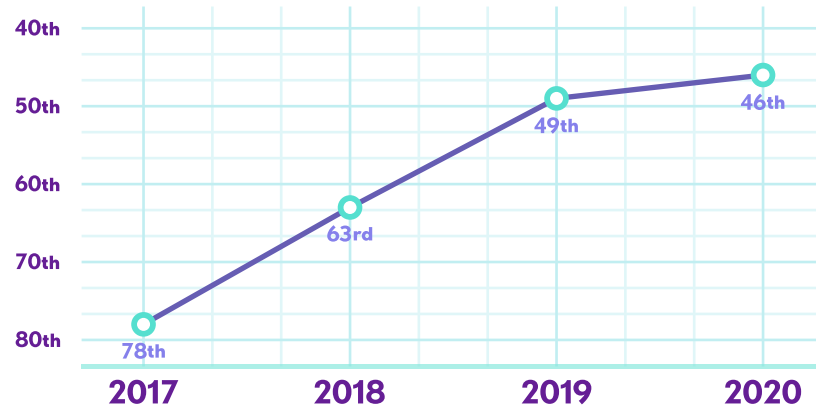
Purple is the Faculty's signature colour

Two overlapping purple and green apricot leaves have come to represent the Faculty of Medicine since 2013. Apricot trees have long been used to embody the medical profession. While purple is the Faculty's signature colour, green symbolizes youth and vigour. Mimicking the leaf veins, the Chinese characters of CUHK (中大) are embossed on the apricot leaf.

Times Higher Education World University Rankings 2020
By Subject: Clinical, Pre-clinical & Health

46th
in the World

8th
in Asia

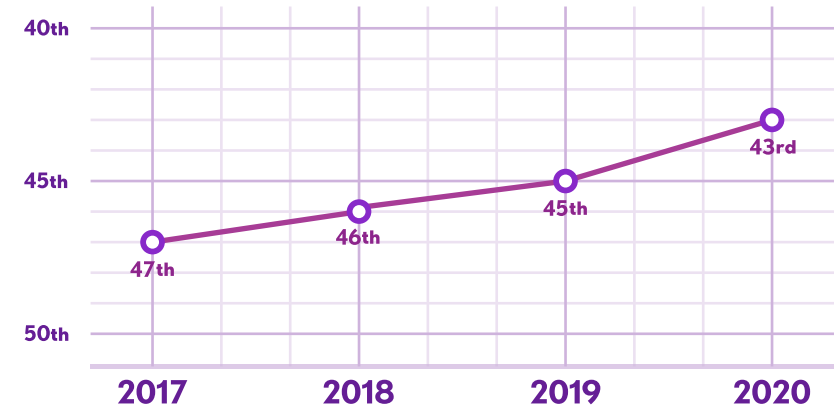


*Figures as at March 2020

QS World University Rankings 2020
By Subject: Medicine

43rd
in the World

5th
in Asia



*Figures as at March 2020

Faculty Deanery



Dean
Professor CHAN Ka Leung, Francis, SBS, JP
Department of Medicine and Therapeutics

Alumni Affairs



Associate Dean
Professor NG Kwok Wai, Enders
Department of Surgery



Assistant Dean
Professor CHAU Pak Chun, Janita
The Nethersole School of Nursing

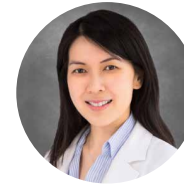


Assistant Dean
Professor YUNG Shu Hang, Patrick, JP
Department of Orthopaedics and
Traumatology

Development



Associate Dean
Professor CHIU Wai Kwun, Rossa
Department of Chemical Pathology



Assistant Dean
Professor NG Siew Chien
Department of Medicine and Therapeutics



Assistant Dean
Professor LEUNG Kai Shun, Christopher
Department of Ophthalmology and
Visual Sciences

Education



Associate Dean
Professor WONG Yeung Shan, Samuel
The Jockey Club School of
Public Health and Primary Care



Assistant Dean
Professor CHAN Sun On, Hector
School of Biomedical Sciences



Assistant Dean
Professor KUMTA Shekhar Madhukar
Department of Orthopaedics and
Traumatology



Assistant Dean
Dr. WONG Ka Man, Carmen
The Jockey Club School of
Public Health and Primary Care

External Affairs



Associate Dean
Professor CHAN Lik Yuen, Henry
Department of Medicine and Therapeutics



Assistant Dean
Professor CHAN Kwan Chee, Allen
Department of Chemical Pathology



Assistant Dean
Professor CHAN Ying Yang, Emily
The Jockey Club School of
Public Health and Primary Care



Assistant Dean
Professor CHIU Wai Yan, Philip
Department of Surgery



Assistant Dean
Dr. LAM Hung San, Hugh Simon
Department of Paediatrics



Assistant Dean
Professor MA Ching Wan, Ronald
Department of Medicine and Therapeutics

Mainland Affairs



Associate Dean
Professor LAN Hui Yao
Department of Medicine and
Therapeutics



Assistant Dean
Professor LEUNG Tak Yeung
Department of Obstetrics and
Gynaecology



Assistant Dean
Professor QIN Ling
Department of Orthopaedics and
Traumatology



Assistant Dean
Professor YU Jun
Department of Medicine and
Therapeutics

Research



Associate Dean
Professor LO Yuk Ming, Dennis, SBS, JP
Department of Chemical Pathology



Assistant Dean
Professor CHENG Sze Lok, Alfred
School of Biomedical Sciences



Assistant Dean
Dr. WONG Hei, Sunny
Department of Medicine and
Therapeutics

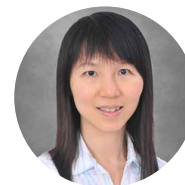
Student Affairs



Associate Dean
Professor NG Siu Man, Simon
Department of Surgery



Assistant Dean (Admissions)
Professor MOK Chung Tong, Vincent
Department of Medicine and
Therapeutics



Assistant Dean (Learning Experience)
Professor WONG Lai Hung, Grace
Department of Medicine and
Therapeutics



Assistant Dean (Student Affairs)
Professor LI Man Chim, Albert Martin
Department of Paediatrics



Assistant Dean (Student Development)
Professor YOU Hoi Sze, Joyce
School of Pharmacy



Assistant Dean (Student Support)
Dr. CHAN Sau Man, Sandra
Department of Psychiatry



Assistant Dean (Student Support)
Dr. HWANG Shui Shan, Isabel
School of Biomedical Sciences



Unique College System



Chung Chi College
Founded in 1951



Admission Scholarships

JUPAS Students

On top of the CUHK admission scholarships, freshmen with Level 5** in 3 subjects or above can additionally receive scholarship of HK\$10,000-60,000 and guaranteed hostel place for 2 – 4 years (renewable subjected to academic performance).

Freshmen with Level 5** in 5 subjects or above can further receive a subsidy of HK\$20,000-40,000 for participating in extra-curricular activities.

82 admission scholarships were offered to freshmen in 2019/20. More information: <http://www.cuhk.edu.hk/ccc/admission/>

Non-JUPAS Students

Freshmen with CUHK's full-tuition Admission Scholarships can additionally receive a subsidy of HK\$40,000 for participating in extra-curricular activities.

Selection Criteria for Other Admission Scholarships

Outstanding performance in Art and Music, Sports, Science and Technology.

Hostel Life

10
buildings

1,400+
places

1-year
residence scheme

Hostel Selection Criteria

- 1) District of residence
- 2) Type of residence
- 3) Others
(e.g. participation in college student activities/ student bodies)



New Asia College
Founded in 1949



Admission Scholarships

JUPAS Students

Freshmen with Level 5** in 3 subjects or above can receive scholarship.

Freshmen with Level 5** in 5 subjects or above can additionally receive free hostel place (renewable).

Non-JUPAS Students

Freshmen with outstanding admission results may receive scholarship.

Selection Criteria for Other Scholarships

Freshmen with outstanding admission results and active participation in activities or services are also eligible for other College scholarships.

Hostel Life

4
buildings

1,186
places

1-year
residence scheme

Hostel Selection Criteria

- 1) District of residence
- 2) Type of residence
- 3) Extra-curricular activities
- 4) Special quotas
(e.g. nomination, president of college student bodies)



'Make One's Virtues Shine and Renew the People'



'Cultivating One's Virtue and Going Deeply into What One Has Learned'



United College
Founded in 1956



Admission Scholarships*

JUPAS Students

Freshmen with Level 5** in 3 subjects or above can receive scholarship.

Freshmen with Level 5** in 5 subjects or above can receive renewable scholarship, and additionally receive guaranteed hostel place and full-hostel fee scholarship.

Non-JUPAS Students

Local freshmen who have fulfilled University Admission Scholarships requirement can receive renewable full-tuition scholarship, guaranteed hostel place and full-hostel fee scholarship.

Selection Criteria for Other Admission Scholarships

- 1) Outstanding performance or contributions in sports, social services, arts and culture (renewable)
- 2) Freshmen as the first generation in the family to pursue tertiary education at United College

*The admission scholarships are subject to quota and conditions. Please visit the College website for details and latest information.

Hostel Life

4
buildings

1,288
places

1-year
residence scheme

Hostel Selection Criteria

- 1) District of residence
- 2) Home environment
- 3) Extra-curricular activities



Shaw College
Founded in 1986



Admission Scholarships

JUPAS Students

On top of the CUHK Admission Scholarships, freshmen with Level 5** in 3 subjects or above can receive scholarships amounted up to HK\$25,000 and International Exposure/ Exchange Scholarships & Awards in the amount of HK\$10,000.

Freshmen with Level 5** in 4 subjects or above can additionally receive free hostel place for 1-2 years.

Non-JUPAS Students

Freshmen with excellent results in public examinations can apply for College's scholarships for first-year students.

Selection Criteria for Other Admission Scholarships

- 1) Special skills or talents
- 2) Financial needs

Hostel Life

2
buildings

1,211
places

1-year
residence scheme

Hostel Selection Criteria

- 1) District of residence
- 2) Type of residence and activity area
- 3) Extra-curricular activities



'Scholarship, Virtue, Service'



'Culture, Morals, Devotion and Trustworthiness'



晨興書院
MORNINGSIDE COLLEGE
Morningside College
Founded in 2006



Admission Scholarships

Provide admission scholarships to freshmen with outstanding academic achievements to cover their hostel and/or meal fees.

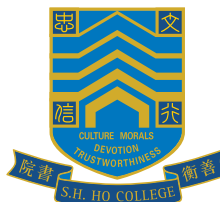
College Selection Criteria

- 1) Academic background
- 2) Non-academic interests and pursuits
- 3) Core values
- 4) Interview

Hostel Life

2 buildings **300** places

Full Residence & Communal Dining residence scheme



S.H. Ho College
Founded in 2006



Admission Scholarships

Medical students with outstanding academic results and talents will be eligible for a number of scholarships amounted up to HK\$600,000.

College Selection Criteria

- 1) Awards/ activities/ duties
- 2) A short essay
- 3) Showing appreciation of College's missions and visions

Hostel Life

2 buildings **600** places

Full Residence & Communal Dining residence scheme



'Cultus et Beneficentia'



'Scholarship and Perseverance'



C.W. Chu College
Founded in 2007



Admission Scholarships

25 admission scholarships will be offered to the entering class, and other scholarships will also be awarded in later years to recognize merit and creativity and to support exchanges.

College Selection Criteria

The College admits no more than 75 students each year, including exchange students, nearly 35% of students will be from outside Hong Kong.

Hostel Life

3 buildings **302** places

Full Residence & Communal Dining residence scheme



伍宜孫書院
WU YEE SUN COLLEGE

Wu Yee Sun College
Founded in 2007



Admission Scholarships

College Admission Scholarships ranging from HK\$10,000-\$20,000.

Freshmen with Level 5** in 3 subjects or above in HKDSE or non-JUPAS freshmen receiving CUHK's full-tuition scholarship can receive guaranteed hostel place for 2 years of study and Exchange Scholarship of HK\$10,000*.

*The admission package is eligible for students who placed Wu Yee Sun College as their first choice in College affiliation.

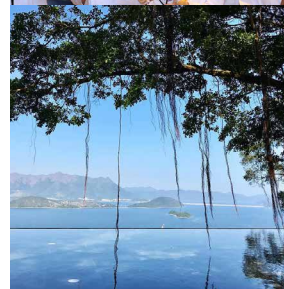
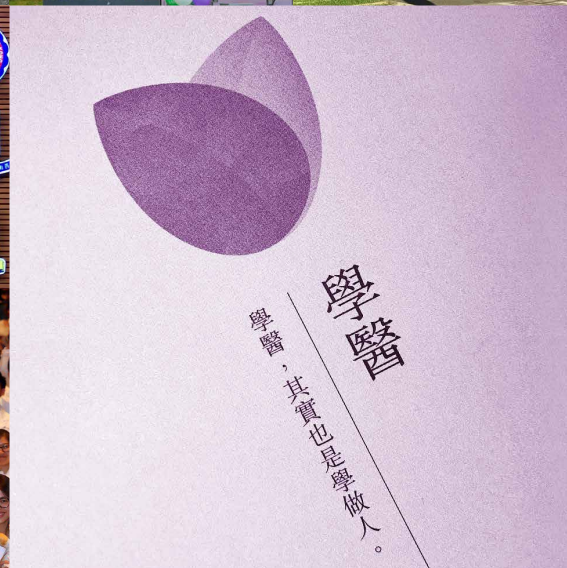
Hostel Selection Criteria

- 1) Total travelling time
- 2) Living area per capita
- 3) Extra-curricular activities (for non-freshmen only)

Hostel Life

1 building **604** places

1-year residence scheme



Lee Woo Sing College

Founded in 2007



Admission Scholarships

Students with outstanding performance can receive a full range of scholarships and special prizes. There were 21 admission scholarship* awards (range from HK\$10,000 to full tuition for 4 year-study) worth over HK\$1 million offered in 2019/20.

*The admission scholarships are eligible for students who placed Lee Woo Sing College as their first choice in College affiliation.

Hostel Selection Criteria

- 1) Traveling time from home to MTR University Station by public transportation
- 2) Average actual household activity area
- 3) Participation in student activities at the College/University

Hostel Life

1 building **640** places

Full residence (8 terms, except summer residence) for GPS students residence scheme



**GPS
 Global Physician-Leadership Stream**

Asia's FIRST Undergraduate Medical Leadership Programme for Tomorrow's Physician Leaders



Admissions

Timeline

(The schedule is tentative and subject to change)

JUPAS

Application

- apply via www.jupas.edu.hk
- programme choices
- personal profile
- application fee



SEP

OCT

NOV

DEC

JAN

FEB

MAR

APR

MAY

JUN

JUL

AUG

Non-JUPAS

Application

- apply via <http://admission.cuhk.edu.hk/non-jupas-yr-1/application-details.html>
- ID document
- academic transcripts
- public examination results
- academic referee(s)
- application fee



Late Application

Updating of Programme Choices

Interview*

- early interview
- JUPAS band A candidates
- selection bases on School Reference Index

Interview*

- early interview
- IB / GCE A-Level candidates
- selection bases on predicted scores

Interview*

- degree holders / undergraduate candidates

Interview*

- IB / degree holders / undergraduate candidates

Interview*

- GCE A-Level candidates

Interview*

- early interview
- JUPAS sub-schemes candidates

Interview*

- JUPAS band A candidates
- selection bases on HKDSE results

Modification of Programme Choices

Offer Results

Offer Results

- from May: conditional offer for IB / GCE A-Level candidates
- from June: firm offer for IB / GCE A-Level candidates
- on rolling-basis

* Interviews are by invitation only

Interview Format

15 minutes

Duration

English

Language



A face-to-face individual interview conducted by two panel members of our senior professors, outstanding medical alumni or distinguished physician leaders in the community.

Interview Categories - "5Ms"

1. **M**otivation and Expectations
2. **M**edicine and Innovation
3. **M**orals, Ethics and Critical Thinking
4. **M**aturity, Leadership and Teamwork
5. **M**anner and Communication

Admission Requirements[^]

MBChB

JUPAS

HKDSE
40

Based on the previous results, we expect that students should achieve a total HKDSE score ≥ 40 for entry into our medicine programme.

The 4 Core subjects and the best 3 Elective subjects will be calculated as the HKDSE total score (where level 5** = 7 points, 5* = 6 points, 5 = 5 points etc.)
The extended mathematics module (M1/M2) contributes to the total HKDSE score if its attained level is higher than that of the worst one of the seven subjects.

Non-JUPAS[#]

IB
42

The minimum requirement is a final score ≥ 42 (out of 45), with grades of at least 6,7,7 in the Higher Level subjects.

GCE
A-Level
4A*

The minimum requirement is 4A* (usually an average mark of $\geq 95\%$). Chinese and Further Maths are not included.

GPS

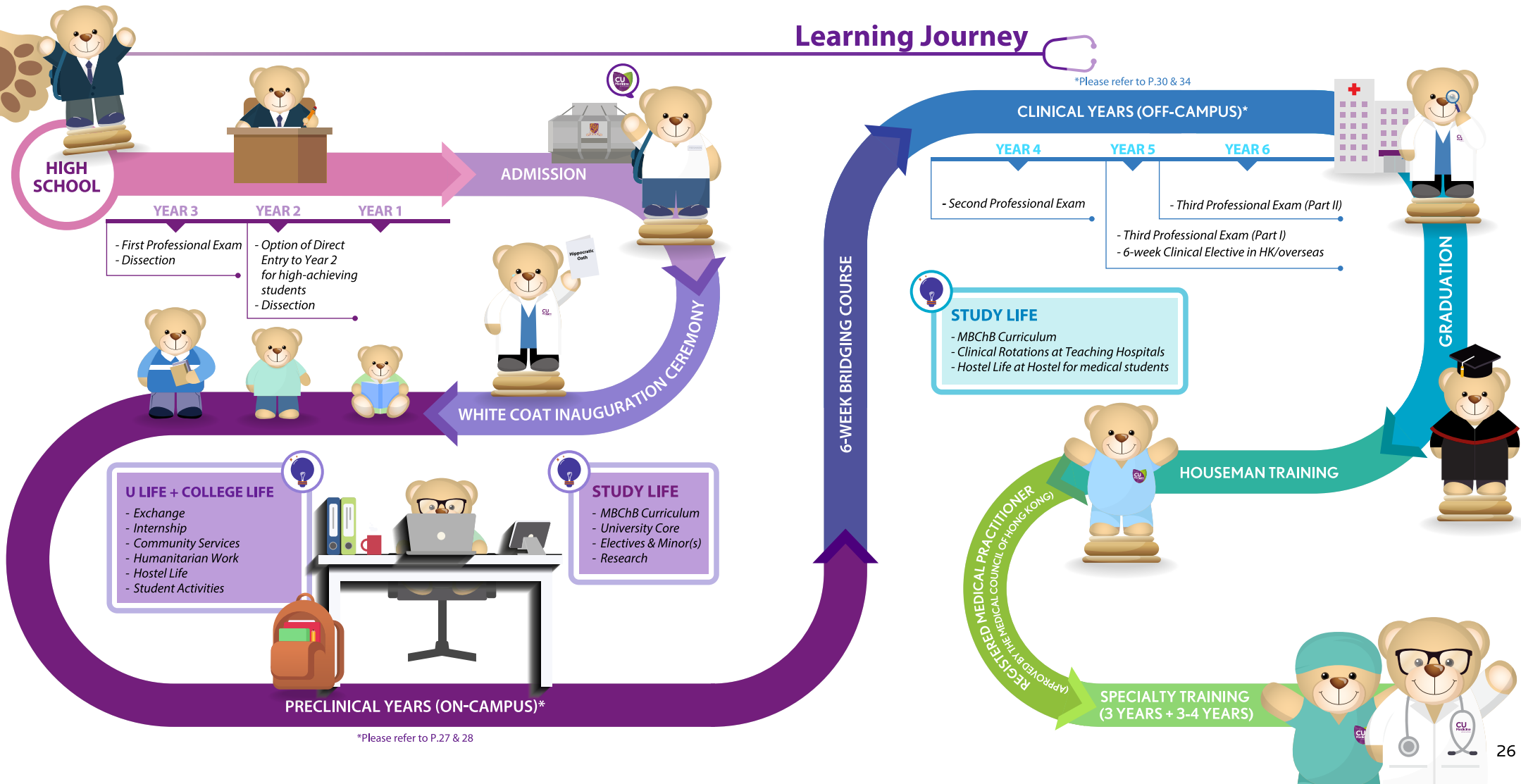
HKDSE
 ≥ 46 and 5**
in 4 subjects

IB
 ≥ 44

GCE A-Level
A* in all subjects with
average mark of $\geq 97\%$

[^] The programme admission requirements are subject to interview performance and a past record of achievement
[#] Non-JUPAS applicants are students applying with academic qualification other than the HKDSE. For admission details, please visit: <http://www.med.cuhk.edu.hk> and <http://admission.cuhk.edu.hk>

Learning Journey



Teaching Facilities



Choh-Ming Li Basic Medical Sciences Building (BMSB)

The BMSB is a dedicated teaching and learning complex for the undergraduate students of the Faculty of Medicine.

Designed to heighten effectiveness and efficiency for education excellence, the building is renovated in 2020 with refurbished modern classrooms, state-of-the art teaching laboratories, computer rooms, and a spacious learning common with rooftop garden that can accommodate more than 130 guests.

Dissecting Laboratory

Choh-Ming Li Basic Medical Sciences Building(BMSB), CUHK

We take special pride in our modern dissection laboratory - one of the finest in the world for hands-on dissection training and life-and-death education. Students learn valuable lessons and anatomy knowledge from the "silent teachers" and develop a deep sense of gratitude and respect for those who have donated their bodies to science.

Since the "silent teachers" programme was launched in 2011, over 14,000 donors have registered the programme to contribute for the future development of local healthcare education and research.



Lo Kwee-Seong Integrated Biomedical Sciences Building

Area 39, CUHK

Equipped with advanced biomedical equipment, the nine-storey, state-of-the-art building contains a demonstration laboratory, seminar rooms, research commons, theme-based laboratories, meeting areas and offices. Its open-plan layout and green designs offer an integrating, eco-friendly environment for the Faculty's expanding research activities and scientific exchanges.

The building has received Platinum Standard rating from the Hong Kong Building Environmental Assessment Method (BEAM).



Prince of Wales Hospital (Major Teaching Hospital of CU Medicine)

30-32 Ngan Shing Street, Shatin

As the largest teaching hospital of CU Medicine, the Prince of Wales Hospital has worked closely with the University to nurture over 5,000 healthcare professionals while supporting our medical research initiatives over the last few decades.

Occupying an area of around 10.5 hectares, the 1,700-bed regional acute hospital provides a comprehensive range of secondary, tertiary, and quaternary healthcare services through its many multidisciplinary teams, offering patients state-of-the-art medical care and cutting-edge treatment of many complex and rare diseases.

The Phase II redevelopment project commenced in 2017 will provide additional space to meet the increasing service demand and operational needs.



Li Ping Medical Library

Lui Che Woo Clinical Sciences Building, Prince of Wales Hospital

The Li Ping Medical Library provides an extensive collection of clinical and medical sciences resources in print and electronic formats to support the needs of students, faculty, and researchers. The design of collaborative learning space and individual study areas can cater to users with different learning styles.

Apart from a few sections, the Library provides 24 hours access for users daily.

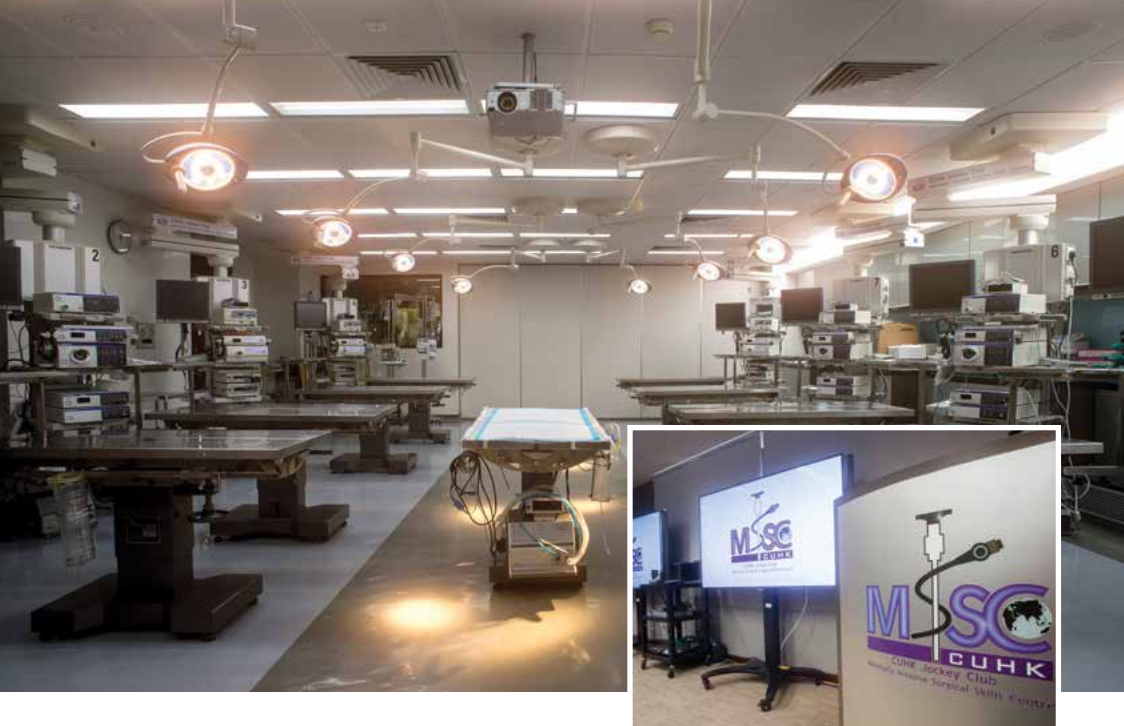


Kai Chong Tong Clinical Skills Learning Centre

Lui Che Woo Clinical Sciences Building, Prince of Wales Hospital

To facilitate teaching and learning of physical examination skills and clinical procedures as part of our integrated systems-based medical curriculum, the 8,000 sq. ft. Learning Centre features 7 consultation rooms, 6 open-space demonstration/lecture rooms, and a control room that open 24-hour daily for students and faculty.

In addition to scheduled training sessions, the Centre maintains a collection of more than 200 models, manikins, compact discs and online materials for intensive learners.



CUHK Jockey Club Minimally Invasive Surgical Skills Centre (MISSC)
Li Ka Shing Specialist Clinic (North Wing), Prince of Wales Hospital

Opened in 2005, MISSC is the first training centre offering minimally invasive, robotic and endoscopic surgical training in the Asia Pacific region.

The centre comprises well-equipped Robotic & Minimally Invasive Surgical Skills Laboratory, Microsurgical & Endoscopic Skills Laboratory as well as Simulated Operating Theatre for facilitating hands-on training and research.



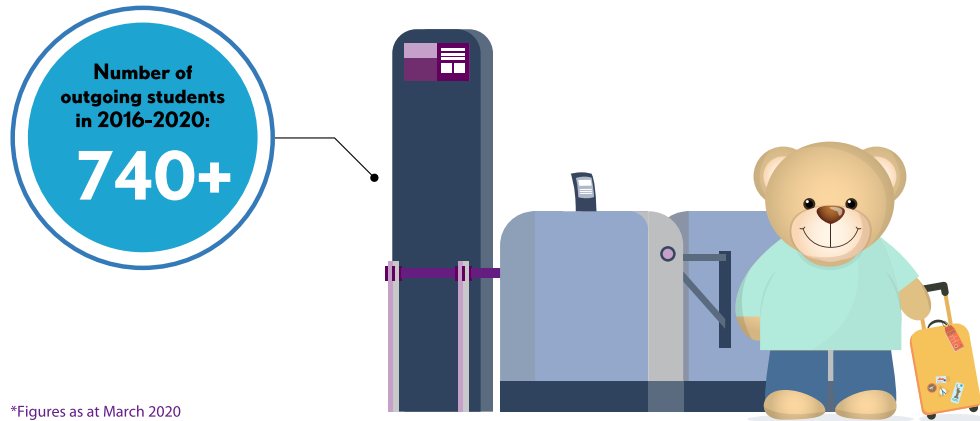
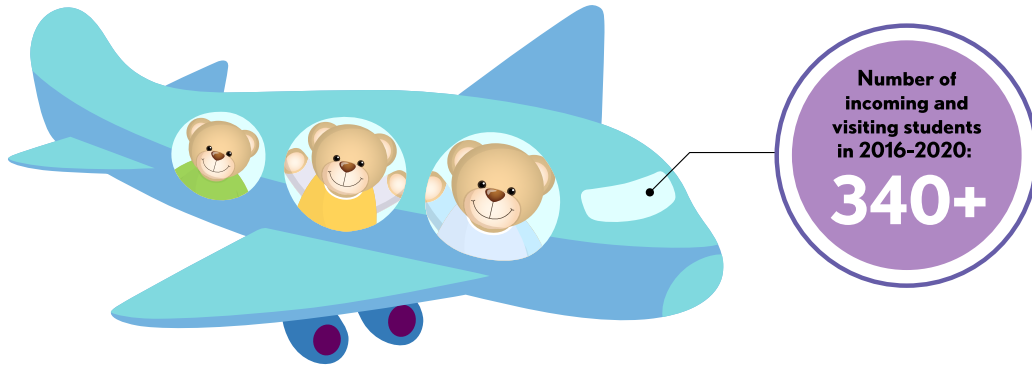
Madam S H Ho Hostel for Medical Students
Prince of Wales Hospital

Situated in the Prince of Wales Hospital and directly managed by CU Medicine, the Hostel provides 304 places to senior medical students and overseas elective students who spend most of their time at the teaching hospital. The priority for allocation of the hostel places will be according to the seniority of the Medical Years.

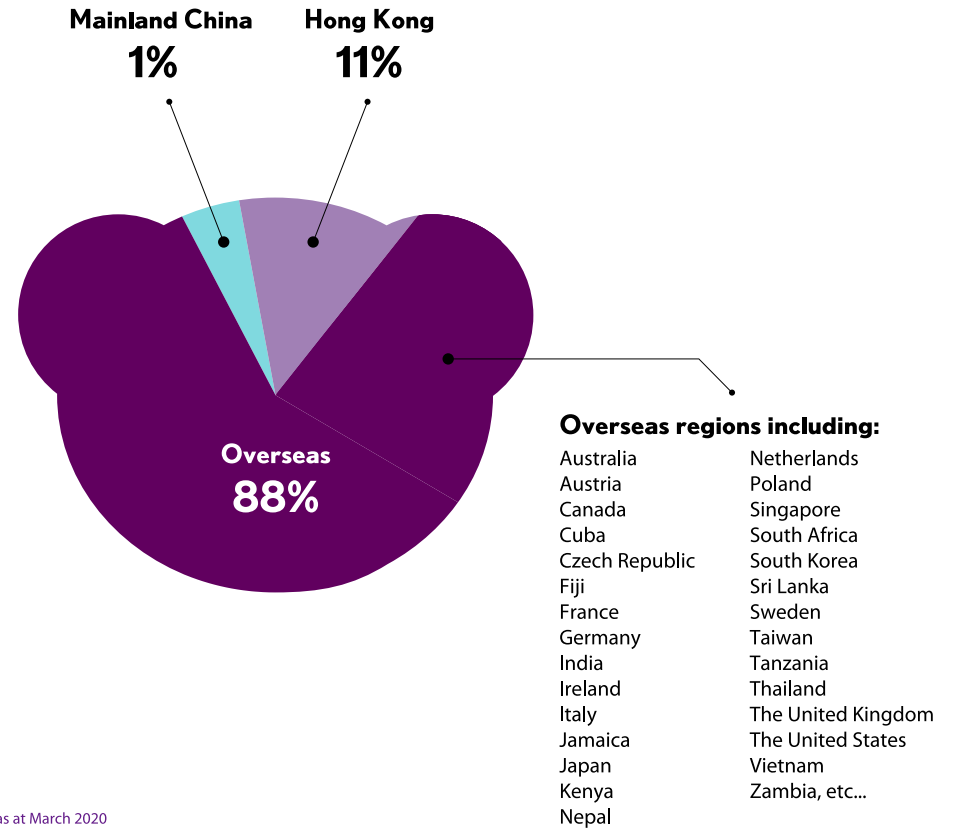
The Hostel offers numerous study spaces, a music room, and a large common area where residents can social, exchange ideas, and host large-scale student events in a relaxing and inclusive environment.

Exchange & Clinical Attachment

Destinations of Student Clinical Attachment in 2016-2020:



*Figures as at March 2020



*Figures as at March 2020

University Admission Scholarships

Qualification

Outstanding academic or non-academic performance

JUPAS: Bases on HKDSE results

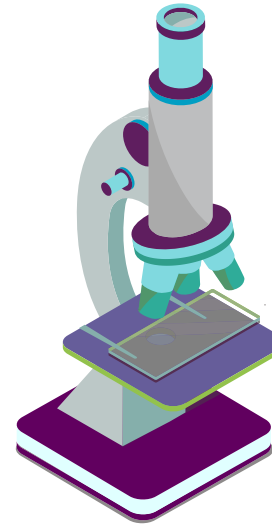
Non-JUPAS: Bases on examination results of GCE A-Level / IB Diploma / SAT / OSSD / B.C. Diploma (or equivalent) / ATAR / Taiwan GSAT / Cambridge Pre-U, etc.

Application

No application is required. The University will identify and grant qualified new students.

Amount

Up to full-tuition coverage. Some of the Admission Scholarships will also include an allowance of up to HK\$45,000 per year. Most of the Admission Scholarships are renewable for the normative period of study programme (subject to satisfactory academic progress).



Faculty Admission Scholarships

Qualification

Students with a total score of 44 or above in 7 HKDSE subjects.

Application

No application is required. The University will identify and inform qualified new students.

Amount

Cover first year's tuition fee, granted in conjunction with the University Admission Scholarships.

Other Admission Scholarships

- E.g. Gerald Choa Memorial Fund Admissions Scholarship
- Li Po Chun Charitable Trust Fund Undergraduate Scholarships
- Wei Lun Foundation Scholarships for the Faculty of Medicine
- TYW Holdings Corporation Scholarships

Scholarships & Awards Figures in 2018-19

Number of scholarships offered	238
Number of medical students awardees	600+
Percentage of medical students awardees	> 45%
Amount of scholarships offered	> HK\$27,000,000

*Figures as at March 2020

The above information is subject to final decision of the University

Research Awards & Honours (2018-2019)



Clarivate Analytics Highly Cited Research 2019



Professor MOK Shu Kam, Tony
Department of Clinical Oncology



Professor CHAN Lik Yuen, Henry
Department of Medicine and Therapeutics



Professor SUNG Jao Yiu, Joseph
Department of Medicine and Therapeutics



Professor WONG Wai Sun, Vincent
Department of Medicine and Therapeutics



Professor LEE Sing
Department of Psychiatry



Nature Biotechnology Top 20 Translational Research 2018



Professor LO Yuk Ming, Dennis
Department of Chemical Pathology



Professor CHIU Wai Kwon, Rossa
Department of Chemical Pathology



World Expert in Aspirin by ExpertScape



Honorary Doctorate Degree by Osaka City University



Professor CHAN Ka Leung, Francis
Department of Medicine and Therapeutics



Joanna and David B. Sachar M.D. International Award



Professor NG Siew Chien
Department of Medicine and Therapeutics

Harold Rifkin Award for Distinguished International Service in the Cause of Diabetes, American Diabetes Association 2019



Professor CHAN Chung Ngor, Juliana
Department of Medicine and Therapeutics

Fellowship, The Royal Australasian College of Medical Administrators



Professor LAI Bo San, Paul
Department of Surgery

Ministry of Education Outstanding Scientific Research Output Awards (Science and Technology) 2018



Professor LO Yuk Ming, Dennis
Department of Chemical Pathology



Professor CHAN Kwan Chee, Allen
Department of Chemical Pathology

Fellowship of the Royal College of Physicians of Edinburgh (FRCP Edin)

Fellowship of the Royal College of Physicians and Surgeons of Glasgow (FRCP Glasg)

Silver Fellowship, U.S. Association of Research in Vision and Ophthalmology

Honorary Fellow of the European Society for Emergency Medicine



Professor WU Ka Kei, William
Department of Anaesthesia and Intensive Care



Professor PANG Chi Pui, Calvin
Department of Ophthalmology and Visual Sciences



Professor GRAHAM Colin
Accident and Emergency Medicine Academic Unit

National Science Foundation of China Excellent Young Scientists 2019



Professor LUI Oi Lan, Kathy
Department of Chemical Pathology



Professor WONG Hei, Sunny
Department of Medicine and Therapeutics



Professor TIAN Xiao Yu
School of Biomedical Sciences

Croucher Senior Medical Research Fellowships



Professor MA Ching Wan, Ronald
Department of Medicine and Therapeutics



Professor NG Siew Chien
Department of Medicine and Therapeutics

Outstanding Medical Alumni



CHAN Shannon Melissa (MBChB 2007)

*Specialist in Surgery, Prince of Wales Hospital
Honorary Clinical Assistant Professor, Department of Surgery
Faculty of Medicine, CUHK
Field Worker of Médecins Sans Frontières*



LEUNG Yu Lung, Dexter (MBChB 1997)

*Honorary Consultant & Specialist in Ophthalmology, Hong Kong Sanatorium & Hospital
Past President, the Hong Kong Ophthalmological Society
Awardee of CUHK Distinguished Medical Alumni Award (Global Achievement 2019)*

CHIU Wai Yan, Philip (MBChB 1994)

*Assistant Dean (External Affairs)
Director, CUHK Jockey Club Minimally Invasive Surgical Skills Centre
Director, Chow Yuk Ho Technology Centre for Innovative Medicine
Professor, Division of Upper GI & Metabolic Surgery, Department of Surgery and
Institute of Digestive Disease, Faculty of Medicine, CUHK
Director of Endoscopy Centre, Prince of Wales Hospital and
Cluster Director of Endoscopy, New Territories East Cluster, Hospital Authority*



SIU Yuet Chung, Axel (MBChB 1992)

*Consultant (Accident & Emergency), Ruttonjee & Tang Shiu Kin Hospitals
Honorary Clinical Associate Professor, Faculty of Medicine, CUHK
Medical Director, Hong Kong Fire Services Department
President, Hong Kong College of Emergency Medicine*



CHOW Kai Ming (MBChB 1995)

*Consultant & Chief of Service, Department of Medicine and Therapeutics, Prince of Wales Hospital
Deputy Service Director (Quality & Safety), New Territories East Cluster, Hospital Authority
President, Hong Kong Society of Transplantation*



YEUNG Man Chow, Maggie (MBChB 1993)

*Specialist in Paediatrics
Medical Volunteer of Hong Kong Red Cross
Awardee of CUHK Distinguished Medical Alumni Award (Humanitarian Service 2019)*

KO Ho, Owen (MBChB 2015)

*Assistant Professor, Department of Medicine and Therapeutics and School of Biomedical Sciences
Assistant Professor (by courtesy), Department of Psychiatry
Principal Investigator, Li Ka Shing Institute of Health Sciences
Principal Investigator, Gerald Choa Neuroscience Centre
Faculty of Medicine, CUHK
Associate Faculty Member, Department of Biomedical Engineering,
Faculty of Engineering, CUHK*



WU Che Yuen, Justin (MBChB 1993)

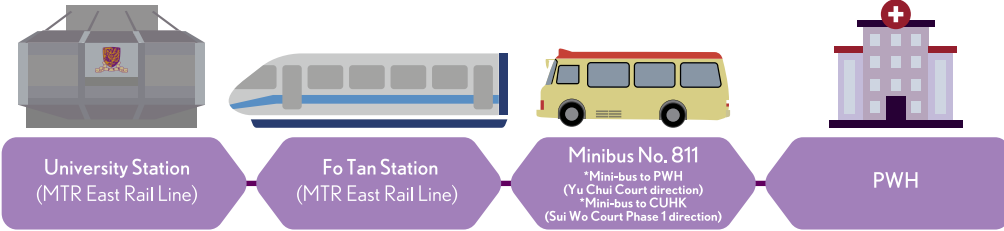
*Chief Operating Officer, CUHK Medical Centre
Professor, Department of Medicine and Therapeutics
Founding Director, Global Physician-Leadership Stream (MBChB-GPS Programme)
Faculty of Medicine, CUHK*



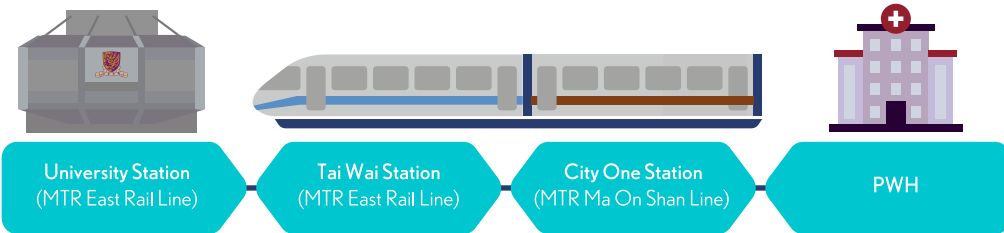
Appendix 1 – Transportation Guide

CUHK → Prince of Wales Hospital (PWH)

Recommended Route 1

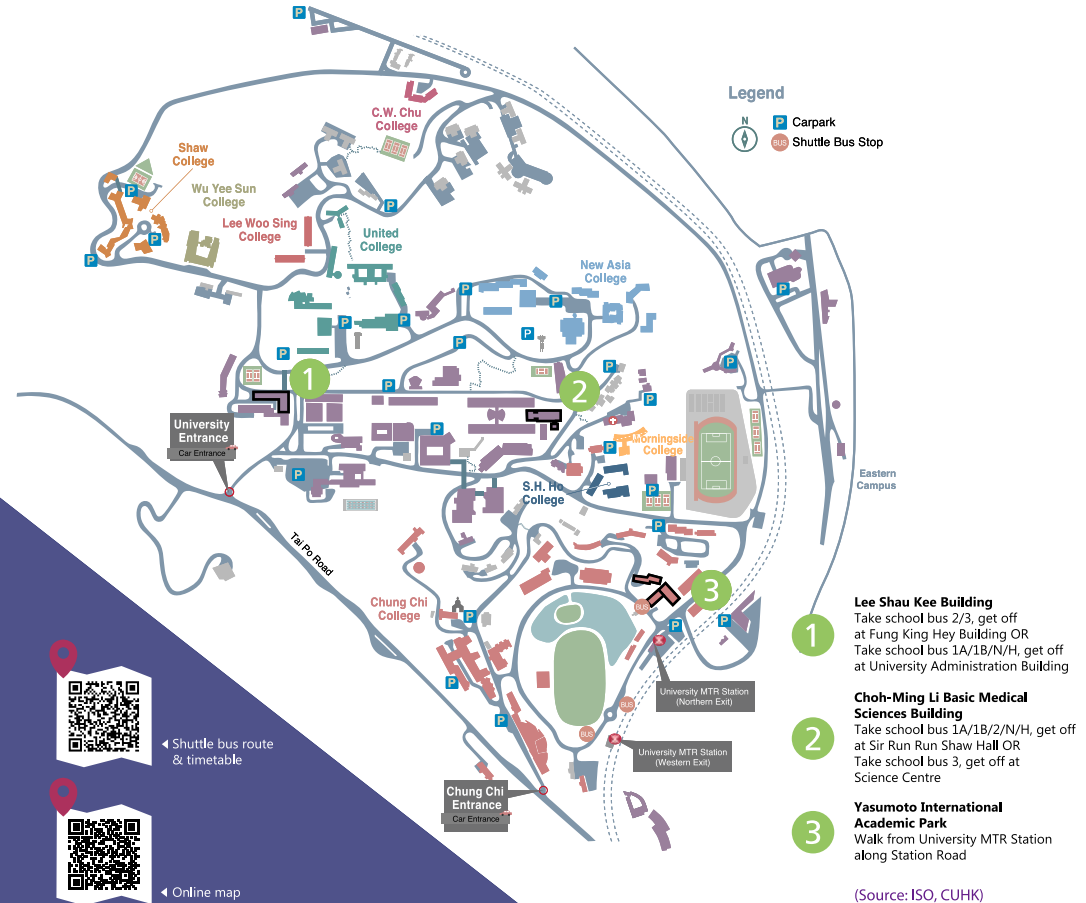


Recommended Route 2



Appendix 2 - Campus Map

Campus Map



(Source: ISO, CUHK)

